

HIGH QUALITY SILAGE
BY SATELLITE PRECISION



NUTRIPLUS SAT

- ADVANCED SATELLITE TECHNOLOGY
- PRECISE SILAGE HARVEST ADVICE
- PERSONALISED CUSTOMER REPORT



How to benefit from the service?

Contact your MAS Sales advisor

masseeds®
UNITED TO GROW

NUTRIPLUS® Sat Service is the association of satellite image technology and MAS Seeds agronomic knowledges to follow and anticipate the percentage of dry matter evolution in silage corn to optimize harvest and silo quality.



AGRONOMIC ISSUES

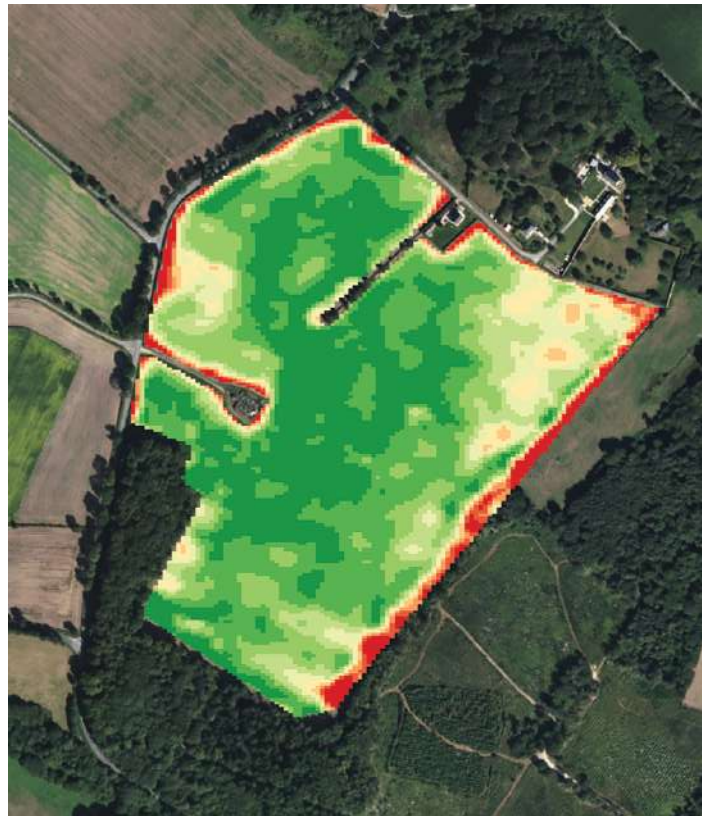
Two out of three farmers do not harvest at the right stage: **50 to 250€/ha losses because of harvest at the wrong stage.**

Silage harvest can not be improvised, it needs to be precise.

SATELLITE TECHNOLOGY

The satellite technology answers to these issues with the following characteristics:

- Real-time imagery
- High Frequency, new updated image is available every 10-15 days
- High-resolution imagery



CUSTOMER SERVICES

NUTRIPLUS® SAT Service provide **regular customer reports from 20% of dry matter until harvest** following these characteristics:

